



Work Better, Feel Better, Effortlessly.

Fellowes Sit-Stand Solutions



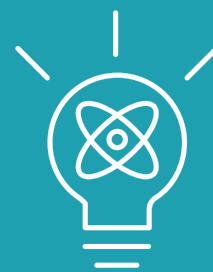


Take a Stand Against Sitting

Over the past 10 years study after study has confirmed sitting for prolonged periods of time is harmful to your health. Some of the negative effects include an increased risk of heart attacks and strokes, high blood pressure and elevated cholesterol. As a leader in workspace management solutions, we knew we wanted to create a solution for this problem. Our complete range of sit-stand products combines a wealth of research and product development with our deep understanding of the office workspace. They're designed to be easy to use, adjustable, and worry-free. Plus, they're engineered with the durability to transition from sitting to standing multiple times a day. All this adds up to a better sit-stand experience and a healthier lifestyle every day. Go ahead, take your stand today.



Charge your phone
and your mind: Use of
a sit-stand desk shows
increased cognitive
performance ¹



Lotus™ DX Sit-Stand Workstation

Optimize any workspace for greater efficiency and flexibility with the Lotus™ DX, designed to empower healthy movement and improved productivity.

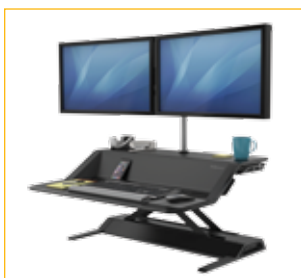
- Easy front access to integrated 2-port USB charging station
- Stay connected without wires using the convenient wireless charging pad for Qi-enabled devices
- Keep your workstation stable and change positions effortlessly with patent-pending Smooth Lift Technology™
- Enjoy a cleaner workspace through built-in Microban® antimicrobial protection that fights the growth of bacteria on surfaces
- Customize your comfort with 22 different height settings and 17" of vertical adjustment
- Experience freedom of movement through innovative cord management with rear USB ports for your keyboard and mouse
- Arrives fully assembled—no complicated instructions, no mounting; just unpack and get started

8080201 - Lotus DX (white)

8080301 - Lotus DX (black)



Wireless charging pad



Convenient channel features wireless charging



Integrated USB ports

Smooth Lift
TECHNOLOGY™

PROTECTION THAT LIVES ON
MICROBAN®



Premium cord management with rear USB hub



Arrives fully assembled

BIFMA
TESTED

Lotus™ Sit-Stand Workstation

Embrace comfort and movement for greater workplace wellness with the Lotus™ Sit-Stand, a workstation crafted to seamlessly transition from sitting to standing.

- Keep your workstation stable and change positions effortlessly with patent-pending Smooth Lift Technology™
- Customize your comfort with 22 different height settings and 17" of vertical adjustment
- Experience freedom of movement through innovative cord management and a device charging slot
- Arrives fully assembled—no complicated instructions, no mounting; just unpack and get started

0009901 - Lotus (white)

0007901 - Lotus (black)



Smooth Lift
TECHNOLOGY™



Keeps your desk organized and free of tangled cords

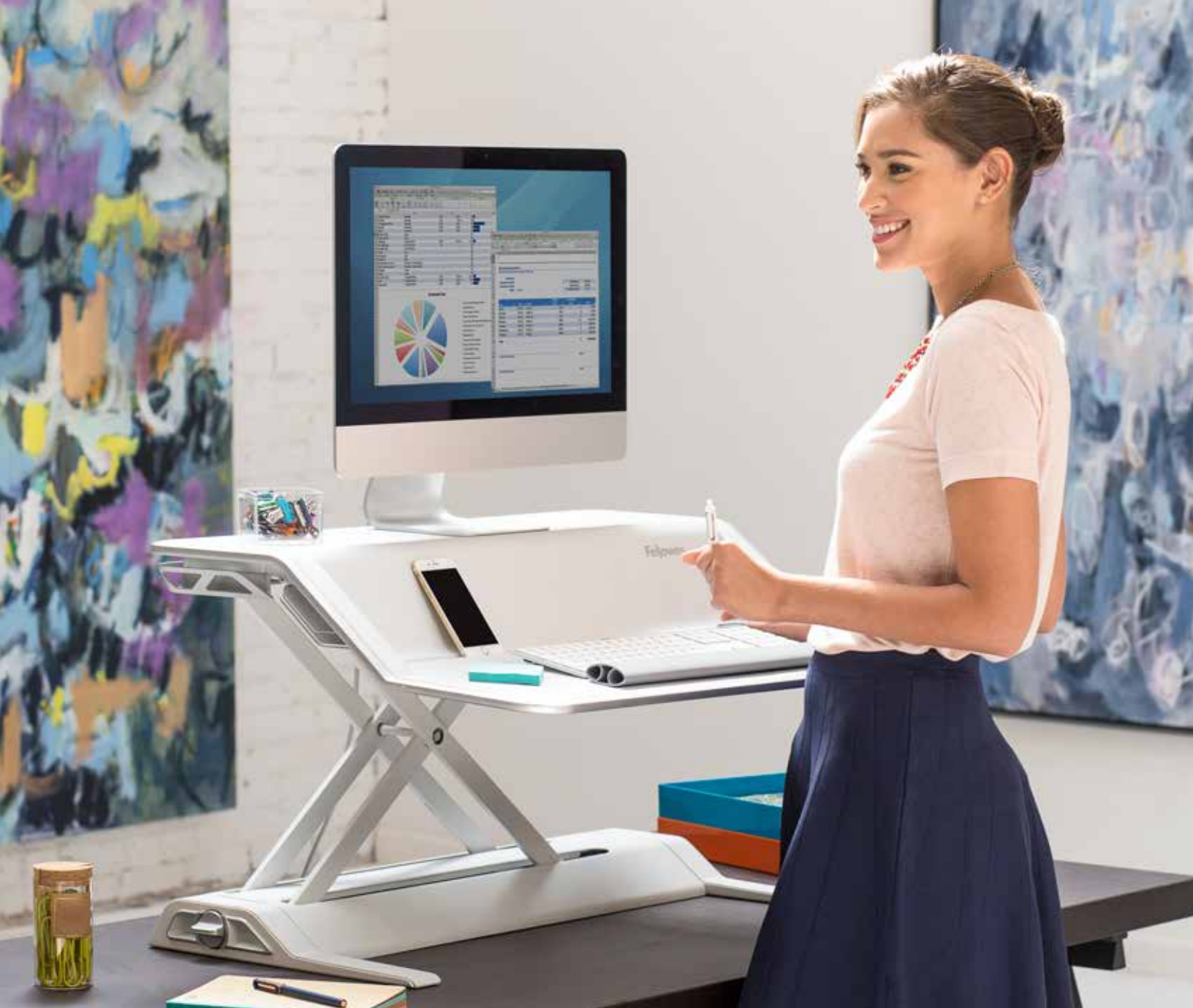


Convenient channel to view mobile devices and notes



Arrives fully assembled

BIFMA
TESTED



Prolonged sitting has
been linked to high
blood pressure and
elevated cholesterol ²





People who
collaborate are more
creative, productive
and confident ³

Extend™ Sit-Stand

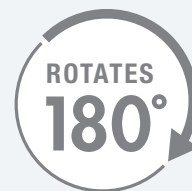
Featuring Humanscale® Technology

Sit and stand no matter the task with the Extend™ Sit-Stand workstation. It encourages collaboration thanks to easy screen sharing and adjustable positioning.

- Easily adjust your position using the premium articulating arm that reaches up to 40" and rotates 180 degrees
- Keep keyboard, mouse, and monitor wires hidden and organized with convenient cord management
- Features reinforced steel construction with a single clamp design that can be mounted to the back edge of any work surface
- Available in both single and dual monitor configurations

0009701 - Extend with Single Monitor

0009801 - Extend with Dual Monitor



Easily share your screen or move the platform out of the way



Keeps your desk organized and free of tangled cords



Adjustable clamp fits desk depths $\frac{5}{8}$ " - $2\frac{3}{4}$ "

Featuring

Technology

Lotus™ VE Sit-Stand Workstation

The Lotus™ VE Sit-Stand features a thoughtful, compact design that makes it easy to go from sitting to standing and back again without missing a beat.

- Maximize useful space and stability through dual work surfaces
- Convenient channel keeps devices and notes at your fingertips
- Keep your desk free of tangled wires with integrated cord management
- Customize your comfort with 16" of vertical adjustment
- The single clamp design with limited installation can be mounted to the back edge of any work surface
- Black ash wood veneer; available in both single and dual monitor configurations

8080101 - Lotus VE with Single Monitor

8082001 - Lotus VE with Dual Monitor



Keeps your desk organized and free of tangled cords



Convenient channel to view mobile devices and notes



Adjustable clamp fits desk depths $\frac{5}{8}$ " - $2\frac{3}{4}$ "

Lotus™ Monitor Arm Kits*

- Monitor arm kits provide an enhanced height adjustment range for maximum workspace

Lotus Single Monitor Arm Kit (8042801)

Lotus Dual Monitor Arm Kit (8042901)



*sold separately

Anti-Fatigue Mats*

- Anti-fatigue mats provide a cushion for standing and are an important accessory for any sit-stand product

ActiveFusion™ Anti-Fatigue Mat (8707101)

- Unique shape promotes stretching and movement



Anti-Fatigue Wellness Mat (8707001)

- Encourages subtle movement to prevent fatigue





Description	A. Lotus™ DX	B. Lotus™ DX	C. Lotus™	D. Lotus™	E. Extend™	F. Extend™	G. Lotus™ VE	H. Lotus™ VE
Product Number	8080301	8080201	0007901	0009901	0009701	0009801	8080101	8082001
Color	Black	White	Black	White	Black	Black	Black Ash Wood	Black Ash Wood
Monitor Mount	Optional	Optional	Optional	Optional	Single	Dual	Single	Dual
Keyboard Platform (W x D)	32 ³ / ₄ " x 12 ¹ / ₈ "	32 ³ / ₄ " x 12 ¹ / ₈ "	32 ³ / ₄ " x 12 ¹ / ₈ "	32 ³ / ₄ " x 12 ¹ / ₈ "	25 ³ / ₄ " x 12 ¹ / ₂ "	25 ³ / ₄ " x 12 ¹ / ₂ "	29 ¹ / ₈ " x 9 ¹⁵ / ₁₆ "	29 ¹ / ₈ " x 9 ¹⁵ / ₁₆ "
Top Platform (W x D)	31 ³ / ₄ " x 8 ¹⁵ / ₁₆ "	31 ³ / ₄ " x 8 ¹⁵ / ₁₆ "	31 ³ / ₄ " x 8 ¹⁵ / ₁₆ "	31 ³ / ₄ " x 8 ¹⁵ / ₁₆ "	N/A	N/A	28 ³ / ₈ " x 8 ¹ / ₈ "	28 ³ / ₈ " x 8 ¹ / ₈ "
Top Platform Height (in lowest setting)	5 ¹ / ₂ "	5 ¹ / ₂ "	5 ¹ / ₂ "	5 ¹ / ₂ "	N/A	N/A	5 ¹ / ₂ "	5 ¹ / ₂ "
Warranty (Years)	3	3	3	3	5	5	2	2
Charging Station	Yes	Yes	No	No	No	No	No	No
Smooth Lift Technology™	Yes	Yes	Yes	Yes	No	No	No	No
Microban® Antimicrobial Protection	Yes	Yes	No	No	No	No	No	No
Cord Management	Premium	Premium	Moderate	Moderate	Moderate	Moderate	Basic	Basic
Device Channel	Premium	Premium	Premium	Premium	None	None	Basic	Basic
Weight Capacity	35 lbs.	35 lbs.	35 lbs.	35 lbs.	30 lbs.	30 lbs.	25 lbs.	25 lbs.
Monitor Height Range from Keyboard Platform	N/A	N/A	N/A	N/A	16 ¹ / ₁₆ " to 20 ¹³ / ₁₆ "	16 ¹ / ₁₆ " to 20 ¹³ / ₁₆ "	13" to 27"	13" to 27"
Max Height from Desk	17"	17"	17"	17"	20"	20"	16"	16"
Assembly Required	No	No	No	No	Yes	Yes	Yes	Yes
Attachment Type	None	None	None	None	Rear Clamp	Rear Clamp	Rear Clamp	Rear Clamp

Product Number	Color	Monitor Mount	Monitor Size Capacity	Monitor Weight Capacity	Height Range	Reach	Warranty (Years)
8042801	Silver	Single	27"	17 lbs.	2 ¹ / ₂ " - 16" above the top surface of the Lotus™ Sit-Stand Workstation	N/A	3
8042901	Silver	Dual	27"	13 lbs. per arm	2 ¹ / ₂ " - 16" above the top surface of the Lotus™ Sit-Stand Workstation	12 ¹ / ₂ "	3

¹<http://www.chicagotribune.com/business/careers/ijustworkhere/ct-huppke-work-advice-standing-desks-0529-biz-20160526-column.html>

²<https://www.washingtonpost.com/apps/g/page/national/the-health-hazards-of-sitting/750/>

³<https://se.insight.com/en-gb/learn/articles/2014-08-10-amazing-stats-collaborative-working?ulang=es>



To contact a Fellowes® service representative,
call 1-800-955-0959 or visit us on the web at
www.fellowes.com

Fellowes
Brands™

© 2017 Fellowes, Inc. | Form # 577D